



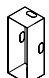




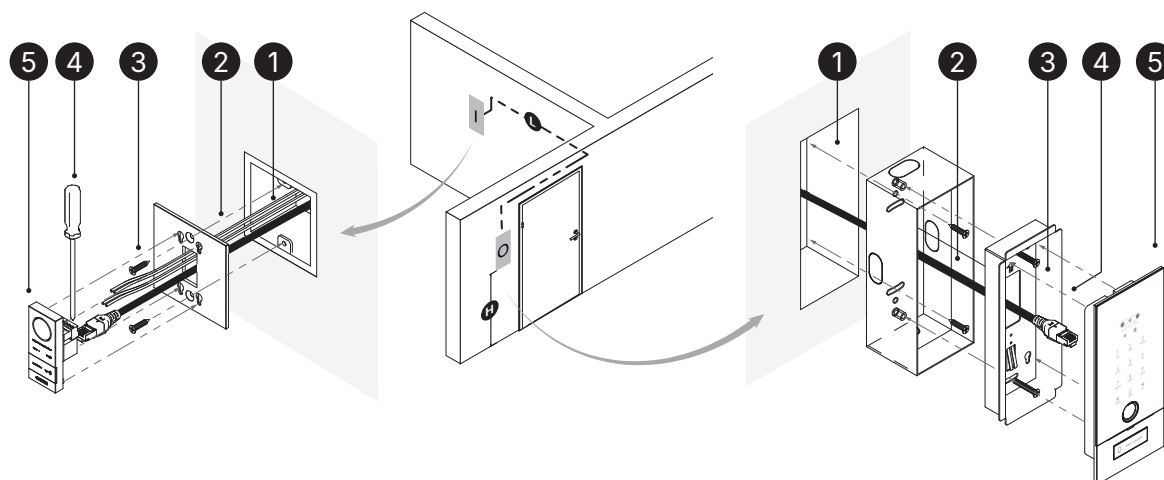
Kmuun DCF

Intelligence entry system
user manual

v 0.9.2

Indoor unit	86 box (Customers provide their own)	Wall-embedded outdoor unit	OU Mounting box	OU embedded box	latch removal					
	Width: 86 Height: 86 Thickness: 12.5(mm)		Width: < 86 Height: < 86 Depth: > 40(mm)		Width: 80 Height: 184 Thickness: 25(mm)		Width: 74 Height: 178 Depth: 24.5(mm)		Width: 68 Height: 172 Depth: 60 (mm)	
<hr/>										
Material & Finish		Keyboard	Facial recognition	Operating Environment:		APP		In The Box		
Anodized Aluminum Alloy		6 to 10-passcode	Distance: 30 ~ 120 cm	RH(Non-cond): 20 % ~ 93 %		Kmuun APP		• Indoor Unit		
Tempered Glass		20-digit pseudo passcode	Height: 1 ~ 2.2 m	Temp: -10 °C ~ 55 °C				• Outdoor Unit		
		Zone Smart Backlighting	FRR: < 0.01%	Optional Low-Temperature Heating Module				• Accessories		
Installation		RFID Card Induction	FRR: < 0.00001%					• RFID Cards		
Remote wall Install (≤4m)		Fingerprint	Speed: < 350 ms	Voice Guidance		Temporary Passcode		• CAT61m)*1		
Ultra-thin Wall-Mounted design		Resolution:500DPI	Voltage	Chinese				• Pin & User Manual		
		FRR:≤0.15%	12 ~ 24 V DC	English						
Storage		FAR:≤0.00004%				Firmware				
100 keys		Auto-update				DCF-0330-092				

Installation Diagram



After positioning the indoor and outdoor units, pre-install the conduit and secure the junction box with screws for later installation.

**Installation requirements:
L (indoor-outdoor): <4m
H (outdoor unit): 1.35-1.45m**

② Installation Wiring: Thread the following required cables through the pre-installed conduit:

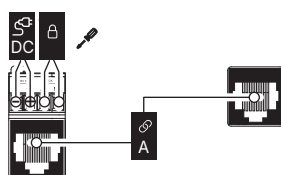
unit connection cable	CAT 6a STP cable
12~24V DC ** Power cable	RVV2 x 2.0 mm2 2-core signal cable
Lock control cable	RVV2 x 2.0 mm2 2-core signal cable

*- Terminate the Ethernet cable with Cat6a RJ45 connectors per national standards after threading.
**- For long-distance power supply, use a 24V DC power source.

③ Use four M4 x 40 flat head screws to secure the indoor mounting plate to the 86 box, and the outdoor mounting box to the outdoor pre-embedded box.

④ Connect pre-run inter-unit, power, and lock control cables between indoor/outdoor units per wiring diagram.

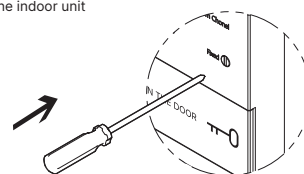
① Indoor unit ② Outdoor unit



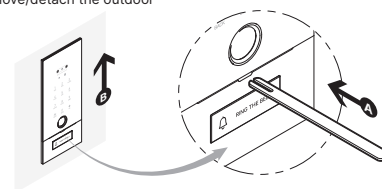
⚠ Connect the product without power.
Wire correctly per the diagram.
After setup, power on. If malfunction occurs, disconnect power and check wiring. If unresolved, contact technical support.

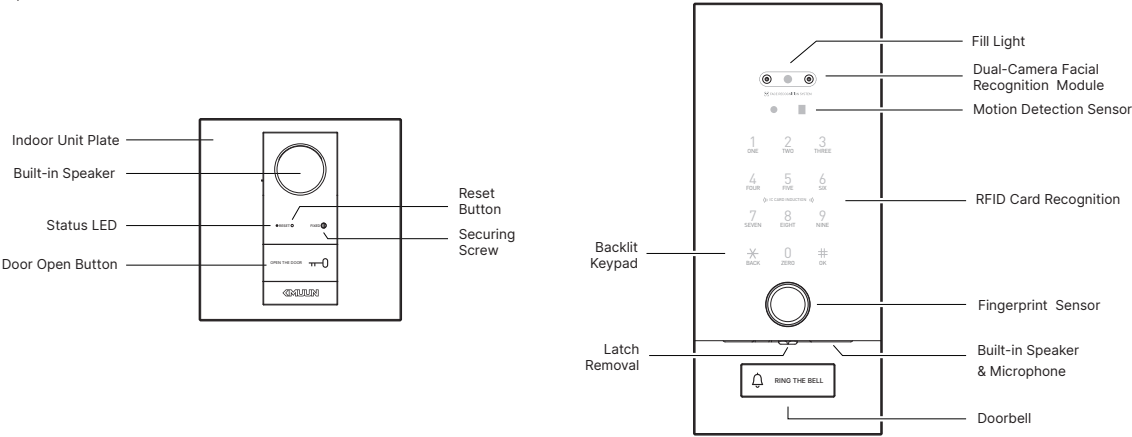
⑤ ***If power-on test passes, mount:
Indoor unit on mounting plate
Outdoor unit on base installation box***

⑥ Secure the indoor unit



⑦ Remove/detach the outdoor

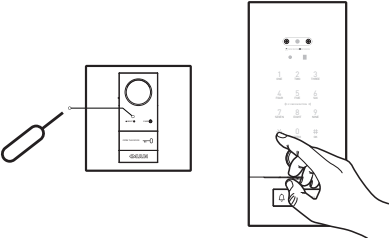




Local Features Operation Instructions

Short-press the inner "Reset" button with a pin, or press * and # keys together on the outdoor unit. In factory mode, this opens the voice setup menu directly. Otherwise, admin verification is needed.

The voice will list 6 options, but only 4 can be configured locally.



- 1 Create New User 2 Delete User 3 System Settings 6 Factory Reset

2 Delete User

Enter user ID

After the voice prompt, enter a configured user ID (01-99) and press #. If "Operation successful" is announced, the user is deleted. Incorrect IDs will result in failure. User 00 (administrator) cannot be deleted.

3 System Setting

1 Time Setting 2 set volume 3 Verification Mode 4 set language

Select a menu to configure after the voice prompt.

1 Time Setting

Follow voice prompts to enter the date (YYMMDD) and time (HHMM). Incorrect settings may disable temporary passcode function.

2 Volume Settings

1 Volume Up 2 Volume Down

1 Create New User

Operation success, User 00.

In initial setup mode (factory mode), the system will enter administrator configuration. You can register up to 10 administrator keys.

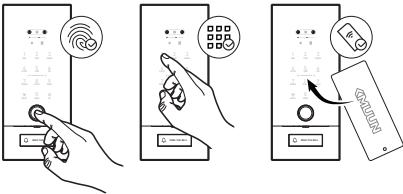
Enter user ID.

After the voice prompt, enter a new or existing user ID (00-99), then press # to confirm. 00 = administrator | 01-99 = standard user.

user ## enter access key 1 Sign up fingerprint, passcode, RFID Card.

2 Sign up facial recognition

1 Sign up fingerprint, passcode, RFID card.



Fingerprint Enrollment: Place the finger on the external fingerprint sensor. Follow the voice prompt "Please press again" and repeat several times until "operation successful" is announced. Interruption or incorrect presses may cause failure.

Passcode Setup: Enter a 6-10 digit Passcode on the keypad. Re-enter it as prompted. If "operation success" is heard, the passcode is set. Passcodes with invalid length or mismatched entries will be rejected. Repeated passcodes are not allowed.

Access Card Registration: Hold the card close to the keypad area. A voice prompt "operation success" confirms registration. Duplicate cards will be rejected.

2 Sign up facial recognition

: Look directly at the camera

Face Registration: Look directly at the camera and follow the voice instructions. "Operation successful" confirms registration.

Duplicate faces will be prompted. Process times out if delayed. Optimal range: 50 cm.

3 Verification Settings

Dual Verification | Single Verification

Follow the voice prompt to select a method. Single verification requires one credential. Dual verification requires two different credentials.

4 Language Setting

Chinese, English

Lockout Mode

Triggered after 5 failed attempts. The external unit locks and announces "System locked. Try again later." Automatically resumes after 3 minutes.

Temporary Passcode Function

Set an Admin Passcode under "Admin 00". Set the correct time on the device (refer to previous instructions). Time must be reset after power loss.

Open the Kmuun App, create an account, and log in. Go to My → Temporary Passcode Generator. Enter your Admin Passcode and set a validity period. A 10-digit temporary password will be generated. The passcode can be used unlimited times within the validity period. Do not share it with unauthorized persons.

6 Factory Reset

Initializing... Initialization complete.

Press # key to confirm selection. Follow voice prompts to finalize setup. Device entering factory mode. Configure new credentials immediately.

Auxiliary Functions

Factory Reset

Hold the reset button with a pin for 6s until "Initializing ... Success" is heard. Release and wait. Unlock will require no credentials. Reconfigure immediately.

Attention

- Before use, read all instructions carefully. Damages from non-compliance are not covered by warranty.
- Use only manufacturer-specified accessories and parts.
- Avoid forcefully disassembling to prevent damage.
- Keep away from water or splashing environments.
- Do not clean the fingerprint sensor with sharp objects or corrosive liquids.
- Clean with a soft cloth and water to prevent surface damage.
- Set up the device immediately after installation to avoid safety issues.
- Keep the admin password confidential.
- If the RFID card is lost, reset the device and set up new keys.

Warranty

- This product's after-sales service strictly follows the "Consumer Protection Law of the People's Republic of China" and the "Product Quality Law of the People's Republic of China," with the following after-sales service terms:
- Within one year from the day after you receive the product, if any performance failure listed in the "Product Performance Fault List" occurs, the product will be repaired free of charge based on the warranty type after being inspected and confirmed by the Kmuun Service Center.
- For damages not covered by the warranty or caused by human factors, the Kmuun Service Center can still provide repair support, but a repair fee will be charged according to the actual condition of the product.