


# Kmuun DCS

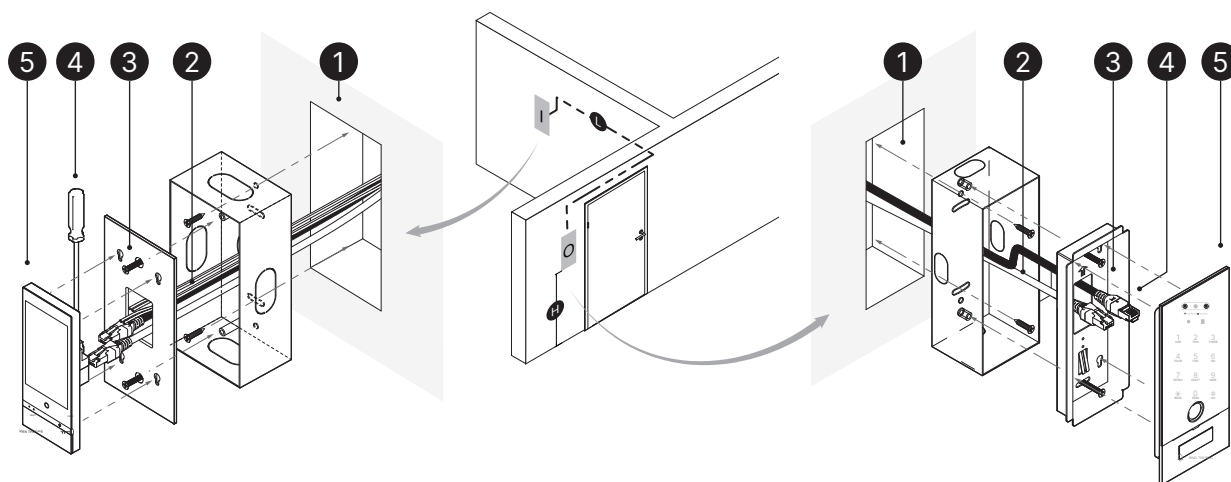
## Intelligent Entry System User Manual

v 0.9.3

Indoor unit	Indoor unit embedded box	Outdoor unit	OU Mounting box	OU Embedded box	Latch Removal
					
Width: 86 Height: 172 Thickness : 14 (mm)	Width: 68 Height: 172 Depth: 60 (mm)	Width: 80 Height: 184 Thickness : 34 (With Port)	Width: 74 Height: 178 Depth: 19 (mm)	Width: 68 Height: 172 Depth: 60 (mm)	

<b>Material</b> <ul style="list-style-type: none"> <li>Anodized aluminum alloy</li> <li>Tempered glass</li> </ul>	<b>Keypad</b> <ul style="list-style-type: none"> <li>6 - 10 digits Passcode</li> <li>20-digit intelligent false code recognition</li> <li>Independent dynamic backlight</li> <li>RFID card Induction</li> </ul>	<b>Facial Recognition</b> <ul style="list-style-type: none"> <li>Recognition distance: 30 - 120 cm</li> <li>Recognition height: 1 - 2.2 m</li> <li>FRR: &lt; 0.01%</li> <li>FAR: &lt; 0.00001%</li> <li>Verification speed: &lt; 350 ms</li> </ul>	<b>Power</b> <ul style="list-style-type: none"> <li>12 ~ 24 V DC</li> </ul>	<b>APP Support</b> <ul style="list-style-type: none"> <li>Kmuun APP</li> </ul>	<b>Packing List</b> <ul style="list-style-type: none"> <li>Indoor Unit</li> <li>Outdoor Unit</li> <li>Accessories</li> <li>Card</li> <li>User Manual</li> </ul>
<b>Installation</b> <ul style="list-style-type: none"> <li>Long-distance wall mounting</li> <li>Ultra-thin embedded design</li> </ul>	<b>Fingerprint</b> <ul style="list-style-type: none"> <li>Resolution: 500 DPI</li> <li>FRR: <math>\leq 0.15\%</math></li> <li>FAR: <math>\leq 0.00004\%</math></li> <li>Automatic fingerprint intelligent update</li> </ul>	<b>Peephole Camera</b> <ul style="list-style-type: none"> <li>Night vision with LED fill light</li> <li>Wide-angle lens</li> <li>Resolution: 1280 x 720</li> </ul>	<b>Operating Environment</b> <ul style="list-style-type: none"> <li>RH(Non-cond) 20% ~ 93%</li> <li>Temp: -10°C ~ 55°C</li> <li>Optional low-temperature heating module</li> </ul>		
<b>Storage</b> <ul style="list-style-type: none"> <li>100 access keys</li> </ul>		<b>Voice Guidance:</b> <ul style="list-style-type: none"> <li>Chinese</li> <li>English</li> </ul>		<ul style="list-style-type: none"> <li>Video intercom</li> <li>Remote unlocking</li> <li>Event Log</li> <li>Message notifications</li> <li>Device sharing</li> </ul>	<b>Firmware</b> <ul style="list-style-type: none"> <li>DCS-0330-092</li> </ul>

### 安装示意图



- ① After positioning the indoor and outdoor units, pre-install the conduit and secure the junction box with screws for later installation.

- ④ Connect pre-run inter-unit, power, and lock control cables between indoor/outdoor units per wiring diagram.

- ⑤ \*\*\*If power-on test passes, mount: Indoor unit on mounting plate Outdoor unit on base installation box\*\*\*

\*\*Installation requirements:

- L (indoor-outdoor): <4m
- H (outdoor unit): 1.35-1.45m\*\*)

- ② Installation Wiring: Thread the following required cables through the pre-installed conduit:

Inter-unit connection cable Cat6a double-shielded Ethernet cable × 2 colors

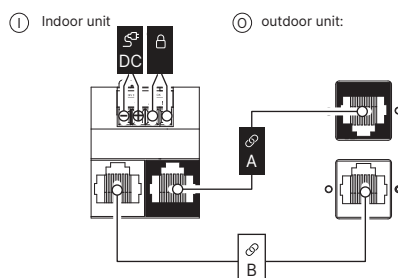
12~24V DC \*\* Power cable RVV2 x 2.0 mm<sup>2</sup> 2-core signal cable

Lock control cable RVV2 x 2.0 mm<sup>2</sup> 2-core signal cable

\* - Terminate the Ethernet cable with Cat6a RJ45 connectors per national standards after threading.

\*\* - For long-distance power supply, use a 24V DC power source.

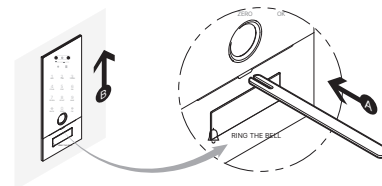
- ③ Fix the "indoor unit mounting" to the "indoor unit embedded box" and the "OU Mounting box" to the "OU Embedded box:" respectively, using four M4 × 40 flat-head screws each.

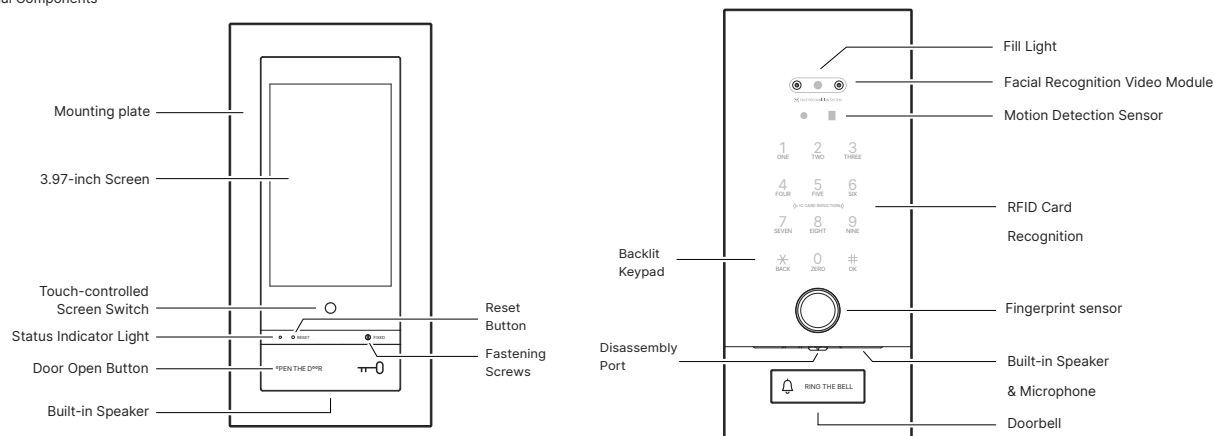


!! Connect the product without power. Wire correctly per the diagram. After setup, power on. If malfunction occurs, disconnect power and check wiring. If unresolved, contact technical support.

- ⑥ Secure the indoor unit

- ⑦ Remove/detach the outdoor

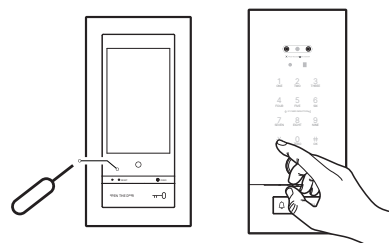




## Local Features Operation Instructions

Short-press the inner "Reset" button with a pin, or press \* and # keys in order on the outdoor unit. In factory mode, this opens the voice setup menu directly. Otherwise, admin verification is needed.

The voice will list 6 options, but only 4 can be configured locally.



1 Create New User 2 Delete User 3 System Settings 4 Factory Reset

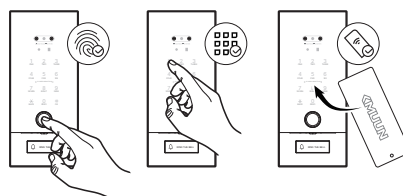
## 1 Create New User

**Operation Successful, User ID 00**  
Factory Mode Initial Configuration: The first-time setup in factory mode will activate Administrator Configuration Mode, allowing configuration of up to 10 administrator access keys.

**Please enter user ID**  
Enter new or existing user number (00-99), Press the # (hash) key to confirm. Proceed to credential configuration. 00 → Administrator account. 01-99 → Standard user accounts

**User ## enter access key** 1 Sign up fingerprint, passcode, card, 2 Sign up Facial Recognition

1 Sign up fingerprint, code, card



**Fingerprint Enrollment:** Place the finger on the external fingerprint sensor. Follow the voice prompt "Please press again" and repeat several times until "operation successful" is announced. Interruption or incorrect presses may cause failure.

**Passcode Setup:** Enter a 6–10 digit Passcode on the keypad. Re-enter it as prompted. If "operation success" is heard, the passcode is set. Passcodes with invalid length or mismatched entries will be rejected. Repeated passcodes are not allowed.

**Access Card Registration:** Hold the card close to the keypad area. A voice prompt "operation success" confirms registration. Duplicate cards will be rejected.

2 Sign up facial recognition

**Look directly at the camera**

**Face Registration:** Look directly at the camera and follow the voice instructions. "Operation successful" confirms registration.

Duplicate faces will be prompted. Process times out if delayed. Optimal range: 50 cm.

## 2 Delete User

**Enter user ID**

After the voice prompt, enter a configured user ID (01–99) and press #. If "Operation successful" is announced, the user is deleted. Incorrect IDs will result in failure. User 00 (administrator) cannot be deleted.

## 3 System Setting

**Time Setting** 1 Time Setting 2 set volume 3 Verification Mode 4 set language  
Select a menu to configure after the voice prompt.

## 1 Time Setting

Follow voice prompts to enter the date (YYMMDD) and time (HHMM). Incorrect settings may disable temporary passcode function.

## 2 Volume Settings

**Volume Up** **Volume Down**

## 3 Verification Settings

**Dual Verification | Single Verification**

Follow the voice prompt to select a method. Single verification requires one credential. Dual verification requires two different credentials.

## 4 Language Setting

**Chinese, English**

## 6 Factory Reset

**Initializing... Initialization complete.**

Press # key to confirm selection. Follow voice prompts to finalize setup. Device entering factory mode. Configure new credentials immediately.

## Auxiliary Functions

## Factory Reset

Hold the reset button with a pin for 6s until "Initializing ... Success" is heard. Release and wait. Unlock will require no credentials. Reconfigure immediately.

## Lockout Mode

Triggered after 5 failed attempts. The external unit locks and announces "System locked. Try again later." Automatically resumes after 3 minutes.

## Kmuun APP Configuration Instructions

**!!** The networking features related to Kmuun DCS are currently being configured. Soon, you will be able to download the official "Kmuun" app from major app stores to complete the network setup with your device.

- Kmuun DCS uses 2.4 GHz Wi-Fi for network connectivity.
- The remote peephole function requires a strong Wi-Fi signal to ensure smooth video playback.
- Through the app, you can access features such as remote peephole, doorbell notifications, and Event Log Push Notifications.

## Attention

- Before using this product, please read and understand all instructions. Damage caused by failure to comply with the instructions is not covered under warranty.
- It is recommended to use manufacturer-specified accessories or parts.
- Do not forcibly disassemble the product, as this may cause damage.
- Do not expose the product to leaking or splashing water.
- Do not clean the fingerprint scanner with sharp objects or corrosive liquids (such as banana oil, gasoline, or 84 disinfectant), as this may damage the sensor.
- Maintain the cleanliness of the product to prevent surface corrosion or damage.
- Use a soft cloth dampened with clean water to wipe the product, then dry the surface immediately.
- After installing the door lock, configure the lock settings as soon as possible to avoid security risks.
- Do not share the administrator password with others.
- If an access card is lost, it is recommended to reset the product to factory settings and reconfigure the key information.

## Warranty Information:

- This product's after-sales service strictly complies with the Consumer Rights and Interests Protection Law of the People's Republic of China and the Product Quality Law of the People's Republic of China, offering a Three-Pack Guarantee (Repair, Replacement, Refund) as follows:
- Warranty Period: 1 year from the day after receipt of the product. If the product exhibits any malfunction listed in the Product Performance Failure Table, Kangmu Service Center will provide free repair services upon confirmation of the defect.
- Non-Warranty Cases: damage caused by human factors (misuse, accidents, unauthorized modifications, etc.). Out-of-warranty repairs are still available at Kmuun Service Center, but fees may apply based on the actual condition of the product.