

Kmuun APP

Kmuun PSP

Power Cable Pass-Through

Kmuun UPS

power supply

Kmuun PSW

Power Cable Pass-Through

Kmuun drives systematic innovation to transform the intelligent entry door industry. As the industry shifts toward electrification, we provide integrated solutions that overcome key challenges. Our full-scenario ecosystem—encompassing the Kmuun APP, PSP Power cable pass through, UPS Wall-mounted power supply, and PSW Wireless Power Supply Pass Through—delivers seamless software control, power delivery, and installation support. This end-to-end approach offers door manufacturers and end users a streamlined, one-stop solution that promotes standardization and ease of use. Our hardware suite delivers tailored power solutions:

PSP power Cable Pass Through: enables simplified, standardized installation. UPS Wall-Mounted Uninterruptible power supply: supports 24V/12V dual-mode operation with 150W output for multi-device use.

PSW Wireless Power Pass-Through eliminates wiring limitations with magnetic resonance technology. Kmuun's systematic strategy is rooted in deep understanding of industry challenges—lack of standards, complex installation, and fragmented systems. No single product can fully address these issues. By integrating hardware and software, Kmuun delivers end-to-end solutions covering access control, security, power supply, and connectivity, significantly reducing installation costs for manufacturers and improving ease of use for customers. Looking ahead, Kmuun will deepen its ecosystem development, promote interoperability with whole-house smart systems, participate in industry standardization, and advance smart entry doors from standalone security devices to integrated home intelligence hubs—making safe and convenient living accessible to more households.



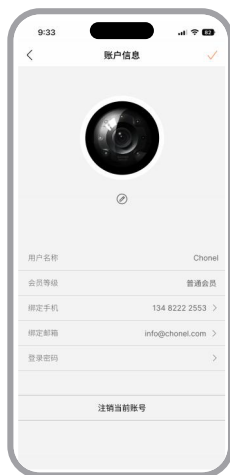
In an era shaped by digital transformation, home security management is evolving from traditional models toward smarter and more precise solutions. At the heart of Kmuun's ecosystem, the Kmuun APP integrates cutting-edge technology and user-centered design to deliver an all-in-one solution—spanning access control, emergency entry, real-time monitoring, and security alerts—redefining the standard for intelligent home safety.

Built on a self-developed intelligent security platform, the Kmuun APP employs end-to-end encryption to ensure absolute security for sensitive data—such as operation logs—during transmission between devices and the cloud. Its access control module enables flexible, multi-dimensional authorization based on user roles (family, guests, service personnel), with customizable parameters including time, area, and operation type.



Setup & Login

Configure device location and name after login



Account Management

Manage and update your account after logging in



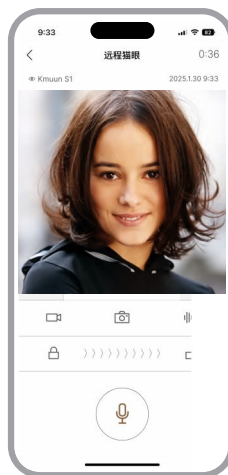
Temporary Access Codes

Require time validation on offline-capable devices



Event Log

Search and review past events



Remote Video Intercom

Answer calls and unlock doors from your phone



Multi-Device Management

One account, multiple devices
Connect and use them simultaneously

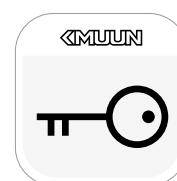
Kmuun APP Intelligent Access Management

For Families, Assign time-limited access for children (e.g. school hours). Configure emergency access for elderly members. Create zone-specific permissions (entry gate, garage, garden) for precise guest management.

For Business and Deliveries, Generate temporary passwords with custom time/usage limits. Share instantly via SMS or WeChat. Grant 30-minute perishable delivery access with auto-expiring codes. Ensure security while eliminating communication hassles

Kmuun APP: Always-On Protection

Travel Security, Monitor your entrance in real-time via live video. Communicate remotely with two-way audio. Activate light/sound alerts to deter suspicious activity. Daily Management, Review access history by timeline: unlock method (fingerprint, passcode, RFID card), time, and device status. Analyze security trends with visual charts: frequent access hours and unusual events. Distributed storage ensures data reliability and supports smart risk detection



Kmuun APP
Your Most Considerate Smart Home Manager

Kmuun PSP Power Cable Pass-Through
Pioneer in Standardized Intelligent Entry Doors

The smart entry door industry has long faced challenges including non-standardized installation, inconsistent electrical interfaces, and complex wiring—hindering scalability and uniformity. Kmuun addresses these pain points with the PSP Power Cable Pass-Through, an innovative solution designed to streamline installation and testing through standardized design and advanced technology.

The system consists of 4 core modules: Door Frame Unit: Features a 220V to 24V adapter with over-voltage, over-current, and short-circuit protection. Sliding Connector: Patented gold-plated spring contacts ensure stable power and signal transmission.

Door Leaf Control System: Standardized interfaces support plug-and-play connectivity for locks and control panels. Built-in Diagnostics & UPS: Self-check function with indicator alerts simplifies troubleshooting, while the battery backup includes protection against over-charge and over-discharge. Kmuun PSP enables faster installation, improved reliability, and true appliance-like convenience.

Patented Grounding Structure: Multi-stage grounding wires form a complete circuit with the door frame and leaf, maintaining resistance below 1Ω. This safely dissipates static electricity and controls leakage current within safe thresholds, eliminating electric shock risks.

High-Capacity Performance: With 150W output, it supports both door leaf and frame side needs. The door leaf side enables plug-and-play power, diagnostics, and UPS backup during outages. The frame side powers wall-mounted panels and smart devices, supports ambient lighting, third-party power input, and offers dedicated ports for anti-pinch sensors—enabling obstacle detection and instant emergency stopping.

Industry-Wide Impact: Kmuun PSP drastically reduces installation time and cost, while standardized interfaces minimize wiring errors and device failures. It accelerates the shift from custom solutions to standardized production, paving the way for broad adoption of smart entry doors.



Kmuun PSP Power Cable Pass-Through
Redefining smart entry standards — making security and convenience truly within reach.

Contact us now to lead the upgrade to standardized smart doors!

Certified Safety: The power design is certified by China Compulsory Certification (3C).



Standardized Design — “0” Installation Barriers
Unified ports, plug-and-play setup. No complex wiring



Patented Tech + 4-Layer Circuit Protection — Total Safety
3C certified. Zero risk of electric leakage



Full-Scenario Compatibility — Endless Expansion
150W high power. Easily supports the entire intelligent entry ecosystem

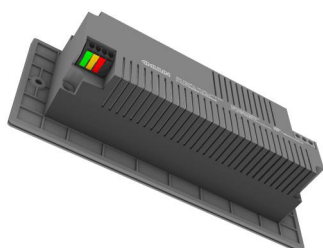
Kmuun UPS Wall-Mounted Uninterruptable power supply Dual-Mode Power Intelligent Manager

As smart home devices become increasingly prevalent, stable and adaptable power supply is essential for seamless operation. Kmuun meets this need with its UPS wall-mounted power system, designed for 118-type embedded boxes and delivering uninterrupted 24V/12V dual-voltage output—ideal for wall-mounted intelligent control equipment.

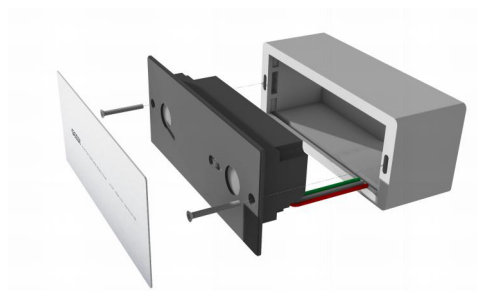
The system features four output ports (GND, 24V+, 24V+(UPS), 12V+(UPS)) to build a robust power ecosystem: 24V+ Provides steady voltage for ambient lighting and basic sensors. 24V+/12V+ (UPS): Ensure continuous operation of critical devices like access systems and electronic locks during power outages. Kmuun UPS offers a reliable power foundation for modern smart entry systems.

Kangmu UPS : Seamless Integration, Robust Performance

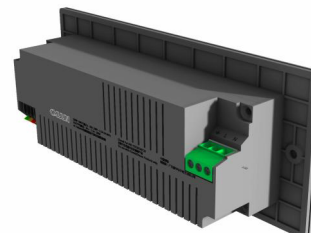
Fits standard 118-type embedded boxes for easy, low-cost installation. Magnetic stainless steel panel combines durability with sleek aesthetics. Streamlined design complements modern home decor while enabling easy maintenance. Delivers up to 150W output to power multiple devices simultaneously. Acts as a reliable power hub for your entire smart home ecosystem.



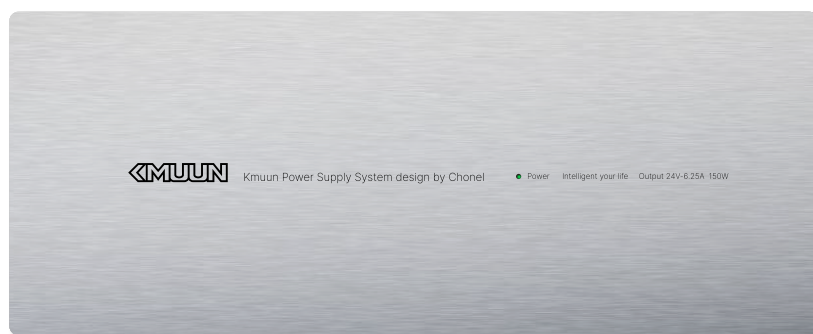
4 Output Ports
GND, 24V+, 24V+(UPS), 12V+(UPS)



Magnetic Stainless Steel Panel
Durable, aesthetic, and easy to maintain.



Live, Neutral, Ground Ports
Compliant. Secure. Reliable.



KMUUN

Kmuun Power Supply System design by Chonel

Power Intelligent your life Output 24V-6.25A 150W

Kmuun PSW Power Cable Pass-Through

The Wireless Revolution in Intelligent Entry Doors

Kmuun PSW Power Cable Pass-Through

The Wireless Revolution in Intelligent Entry Doors

Breaking Industry Bottlenecks.Traditional wired cable pass-throughs suffer from vulnerable contacts, complex installation, and poor compatibility—hindering industry progress. Kmuun addresses these challenges with the PSW , leveraging revolutionary magnetic resonance technology to redefine power and data transfer for intelligent entry doors.Replaces physical contacts with coupled coils embedded in the door frame and leaf.Delivers stable 12V power and data transmission wirelessly.Eliminates oxidation, corrosion, wear, surge, and leakage risks.Enhances system stability and product lifespan.Solves power and control challenges for off-axis and special door types.Enables intelligent upgrades for previously incompatible designs.

PSW system operates through seamlessly coordinated Precision modules:
Frame-Side Unit:220V to 12V adapter with LLC resonant topology.Multi-protection: over-voltage, over-current, short-circuit.Leaf-Side Control.Integrated recognition chip for plug-and-play setup.Auto-matching of connected devices.Extended Security & Power.Built-in UPS: 6-hour backup during outages.Patented grounding: <0.5Ω resistance, EMI shielding, and anti-static coating.Full 3C certification, eliminating electric leakage and static risks.



Patented Magnetic Positioning Structure.Uses strong magnetic force to accurately align wireless coils between door frame and leaf, preventing misalignment caused by installation error or long-term use.

Significantly improves wireless transmission efficiency, reduces energy loss, ensures stable power and signal delivery, and extends device service life—delivering a smarter, more energy-efficient wireless power solution for smart entry doors.



Tired of aging door wiring?
Fed up with complex installation?
Kmuun PSW Wireless Power cable pass-Through
Enter a new era of wireless smart entry.
No contacts, no wear — pure wireless transmission
Standardized ports, plug-and-play simplicity
Patented grounding for total safety
Ideal for off-axis doors and whole-house smart upgrades
Kmuun PSW: More reliable power, easier installation, smarter living.
Redefining entry safety with wireless innovation.