

# Kmuun P1

## Intelligence Entry System User Manual

v 0.0.2

### Indoor Unit



Width:27  
Height:67  
Depth:10.6 (mm)

- Ringtone Toggle Button
- Door Release Button, Mounting plate
- Surface Mounting & Standalone Installation

### Outdoor Unit



Width:27  
Height:67  
Depth:11.3 (mm)

- Immersive Indicator Light
- Touch-Doorbell
- Embedded & Installed In The Door Leaf/Handle

### Controller



Width:24  
Height:212  
Depth:19.6 (mm)

- Status LED, Reset Button, Setup Button
- Embedded Installation at The Door Hinge Side
- Hardware Control Center

### Storage

- 250 Keys (including 99 fingerprints)

### Fingerprint

- Verification Time: < 0.5 s
- FRR: < 1 %
- FAR: 1 / 100000
- 360° Fingerprint Scanning
- Auto-update

### Power

- 12 ~ 24 V DC

### Operating Environment

- RH(Non-cond):20 % ~ 93 %
- Temp: -10 °C ~ 55 °C

### Storage Environment

- RH(Non-cond):40 % ~ 60 %
- Temp: 15 °C ~ 25 °C

### In The Box

- Indoor Unit
- Outdoor Unit
- Controller
- Cables
- RFID Cards
- Pin & User Manual

### Firmware

- V 1.0.1

### APP

- Bluetooth Unlocking
- Device Sharing
- Key Management
- Event Log

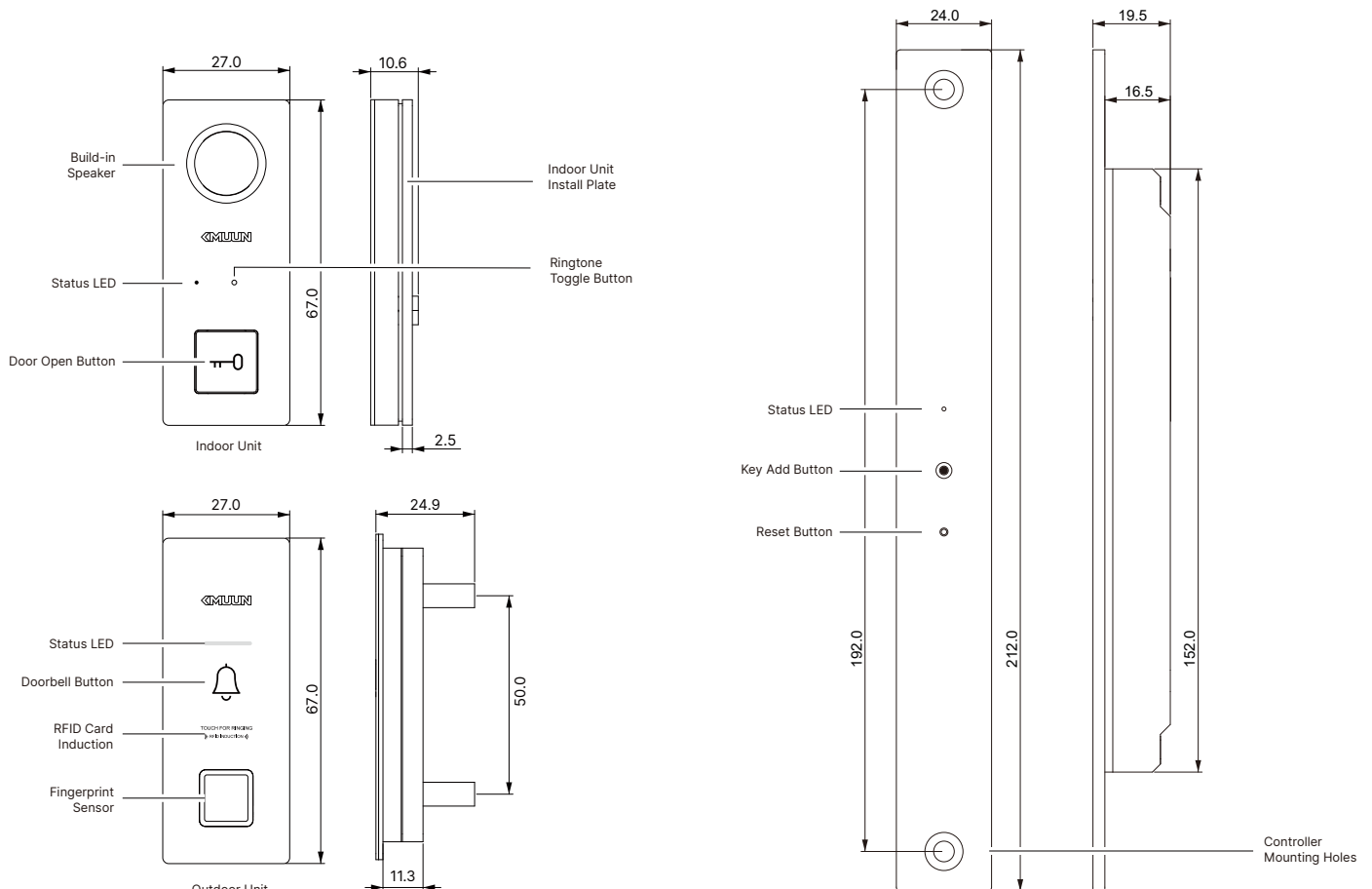
### Local Boot Menu

- English, Chinese, Status LED & Sound Effects

### Features & Specifications

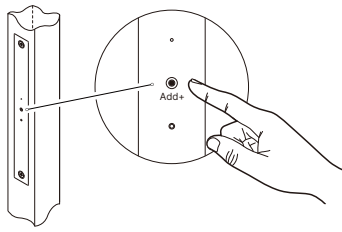
- Exquisitely compact & sleek design
- Anodized Aluminum Alloy
- Tempered Glass Plate
- Embedded Installation
- Secure Encryption Algorithm
- 360° Fingerprint
- RFID Recognition
- Bluetooth Antenna
- KMUN APP
- Doorbell Call Touch Button
- Status & Setup LED
- Ringtone Toggle Button

### Dimensions and Functional Components

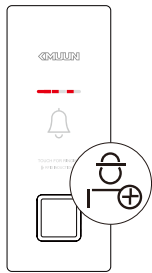


## Setup Process for Administrator/Standard User Keys

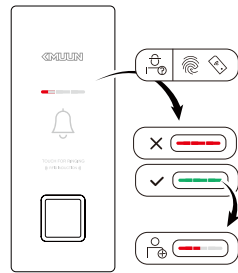
- 1 Press the Key Add Button(Add+)on the controller to enter key setup mode.



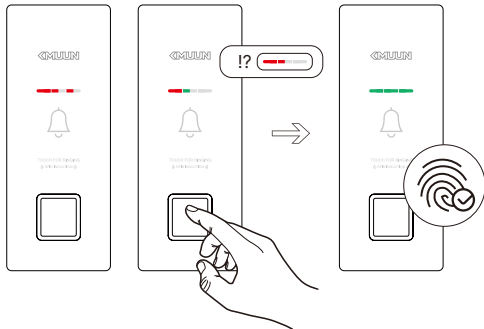
- A Enter Administrator key setup mode. The "outdoor unit - all status LED" will show from left to right: "steady red", "blinking red", and "blinking red".



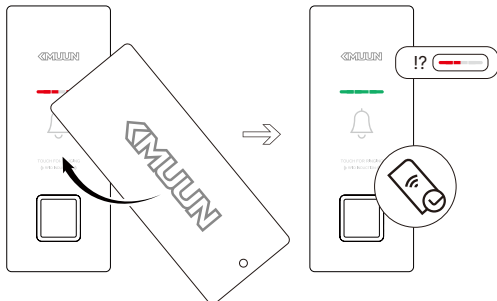
- B Outdoor Unit - Left status LED is blinking red. Administrator fingerprint or RFID card authentication is required to obtain setup permissions.



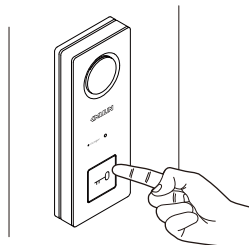
- 2 Fingerprint: Place your finger on the fingerprint sensor. Repeat the process until you see outdoor-all status LED show green, Setup succeeded.



RFID Card: Place the card above the sensor. If you see outdoor-all status LED turn green, Setup succeeded, the card is set.



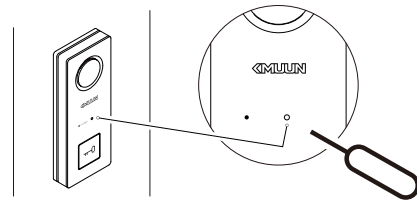
- 3 After setup any key, you may continue or exit. To add another key type, repeat the enrollment process. To exit, press the "Door Open Button" on the indoor unit.



## Accessibility Features

- 1 Switch Built-in Doorbell Ringtone

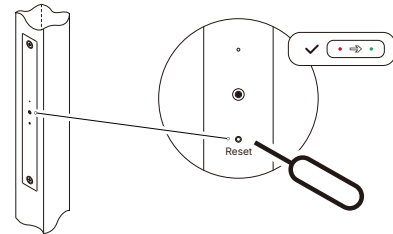
Use a pin press "Indoor Unit - Ringtone Switch Button" to change the doorbell tone. Each press cycles to the next melody. There are 23 tones available. device will save the last selected tone as the default restore-to-factory setting, but the doorbell tone will reset after a power outage.



- 2 Force Reset to Factory Mode / Restart device

Use pin to press 'controller Button' for 6 seconds until you see 'controller status LED' turns red;Then release. Wait for it to turn green, indicating that the device has been successfully restored to factory mode. Note that no key is required to unlock at this stage. Please reconfigure the device promptly.

To restart the device, briefly press the "Controller - Reset Button" with a pin.



### Status LED Infos

Light up	Blink	No light
●	○	●
In	Out	controller

Command executed success	●	●	●	●/●
--------------------------	---	---	---	-----

Command execution failed	●	●	●	●/●
--------------------------	---	---	---	-----

Frozen Mode	●	●	●	●
-------------	---	---	---	---

Admin Setup Mode	●	●	●	●
------------------	---	---	---	---

Standard User Standard User	●	●	●	●
-----------------------------	---	---	---	---

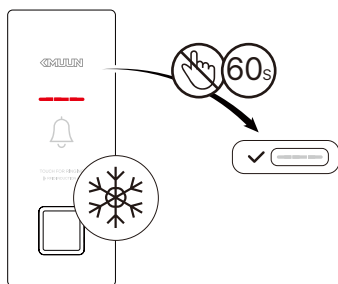
Key Setup Error	●	●	●	●
-----------------	---	---	---	---

Fingerprint Sign up Success	●	●	●	●
-----------------------------	---	---	---	---

### 3 Frozen Mode

After 6 times failures, the system will enter 'Frozen Mode.' outdoor unit" will not accept any commands, and all status LED will turn red.

Freeze mode will automatically revert to normal operation after 60 seconds of inactivity, and the red light will turn off.



### 4 Event Log

- Tap the " " icon in the lower-right corner of the Bluetooth key card to view event records during device operation.
- The device itself can hold a maximum of 80 event records. These records will be deleted after synchronization with the APP is completed.
- Event recording can be enabled or disabled according to personal preferences.

### 5 Unlink the device

- Swipe left on the Bluetooth key card and tap the delete button to disconnect the device from your phone.
- If you need to reconnect the device, press and hold the "Controller - Reset Button" to restore it to factory mode.
- If the device is restored to factory mode locally, any other user can then connect to it via the APP.

## KMUUN APP Setup Guide

- !!
- Mobilephones setup requires Bluetooth. Users must enable Bluetooth and grant relevant permissions on their phones.
  - The door lock's Bluetooth range is up to 5 meters, but may be reduced by obstacles like walls.
  - A device can only pair with one phone. Additional users require administrator-shared permissions to configure and connect via mobile.
  - Search for "Kmuun" on the App Store, or scan the QR code below to get the latest version of the APP and related instructions.
  - Content may change with updates. Refer to the actual app for accurate information.
  - P1 does not support connection or operation via the Apple APP.



## Notes

- Before use, read all instructions. Damages from non-compliance are not covered by the warranty.
- Use only manufacturer-specified accessories.
- Avoid forcefully disassembling to prevent damage.
- Keep away from water or splashing environments.
- Do not clean the fingerprint sensor with sharp objects or corrosive liquids.
- Maintain cleanliness to prevent surface damage.
- Clean with a soft cloth and water.
- Set up the device immediately after installation.
- Keep the admin password confidential.
- If the RFID card is lost, reset the device and set up new keys.

## Connect the device to the phone

- Open the APP and follow the instructions to register.
- Tap the "+" icon in the upper-right corner of the home screen, search for nearby devices in operation, and then tap the icon to add them.
  - When the local device is in factory mode, the APP can directly add the device after completing the address information. Subsequently, if additional users need to be added, the device must be activated for key configuration operations while connected to the APP.
  - If a local administrator is already set on the device, wait for the buzzer sound when connecting via the APP, then press the "Add+" button on the controller and follow the prompts to obtain authorization from the local administrator. Once authorized, the connection will be established. You may also fill in address information as prompted to distinguish between multiple devices.
- Upon successful connection, a Bluetooth key for the device will appear on the home screen and an automatic unlock will complete the binding process.

## Warranty

- This product's after-sales service strictly follows the "Consumer Protection Law of the People's Republic of China" and the "Product Quality Law of the People's Republic of China," with the following after-sales service terms:
- Within one year from the day after you receive the product, if any performance failure listed in the "Product Performance Fault List" occurs, the product will be repaired free of charge based on the warranty type after being inspected and confirmed by the Kmuun Service Center.
- For damages not covered by the warranty or caused by human factors, the Kmuun Service Center can still provide repair support, but a repair fee will be charged according to the actual condition of the product.

## APP Features

- Bluetooth Key Unlocking
  - Tap the Bluetooth key card to complete the unlocking operation.
- Device Sharing
  - Tap the " " icon (lower-right corner of the Bluetooth key card) to share device access with other registered users. You can manage permissions for shared devices as needed.
  - Users who receive a shared Bluetooth key will have administrator privileges.
- Key Management
  - Tap the " " icon in the lower-right corner of the Bluetooth key card and follow the guide to initiate the key configuration process without using any physical buttons.
  - Additionally, the permission level for each key can be configured.
  - You can rename and delete individual keys.