

# Kmuun P5

## Intelligent Entry System User Manual

v 0.0.1

### Outdoor Unit



Width: 60  
Height: 143  
Depth: 25 (mm)

### Indoor Unit



Width: 32  
Height: 74  
Depth: 12.5 (mm)

### Finish

- Anodized Aluminum Alloy
- Tempered Glass

### Installation

- Indoor & Outdoor Unit Pair Install
- Ultra-Thin Embedded Design

### Storage

- 100 Keys

### Passcode

- 6 to 10-digit passcode
- 20-digit pseudo passcode
- Dynamic Backlight
- RFID Card Induction

### Fingerprint

- Resolution: 500 DPI
- FRR: <=0.15%
- FAR: <=0.00004%
- Auto-Update

### Facial Recognition

- Distance: 30 - 120 cm
- Height: 1 - 2.2 m
- FRR: < 0.01%
- FAR: < 0.00001%
- Ver. Time: < 350 ms

### Power

- 12 ~ 24 V  $\pm$ 10% DC

### Operating Environment

- RH: 20 % ~ 93 %
- Temp: -10 °C ~ 55 °C

### Voice Guidance

- Chinese
- English

### APP

- Kmuun APP

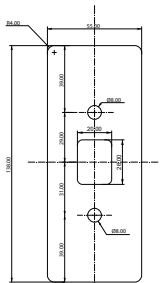


- Temporary Passcode Unlock

### In The Box

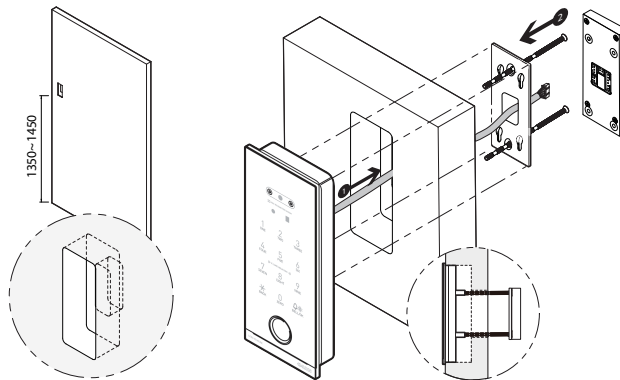
- Indoor Unit
- Outdoor Unit
- Cables
- RFID Cards
- Pin
- User Manual

1



Prepare the installation site (1350~1450 mm Height) by opening slots as per the given dimensions. Ensure wire conduits and pass-throughs are ready on the door for installation, mounting).

2



1

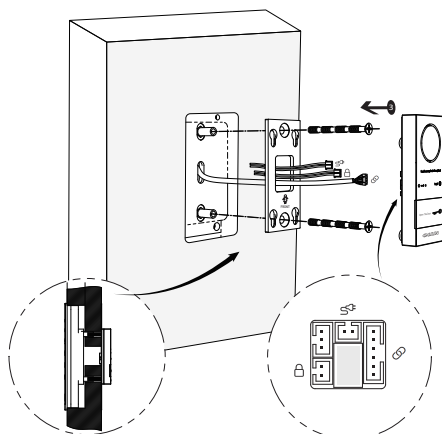
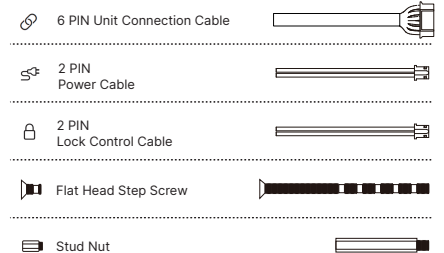
Feed the pre-installed Connection cables, along with power, lock control cable, through the inner opening.

2

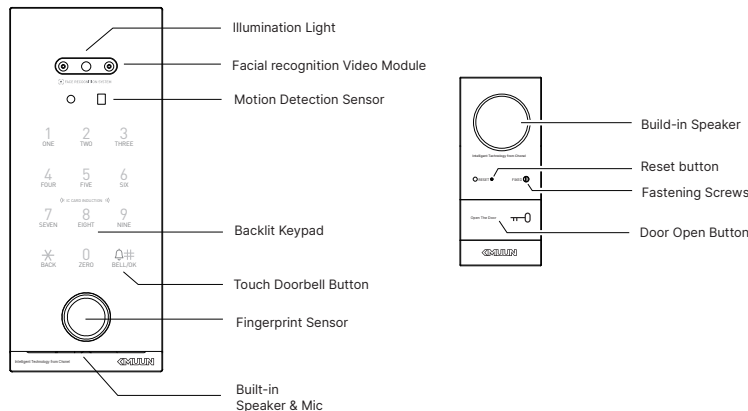
Place the outdoor unit into the precision slots.

3

Choose the appropriate length of two flat-head screws based on the thickness of the door body, and fix the inner panel mounting plate to the outer unit together (as shown in the picture inside the circle)

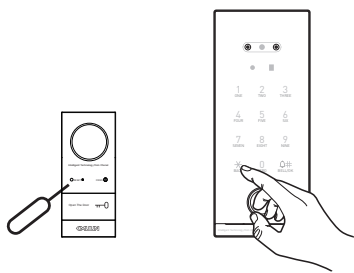


- Connect the product before turning on the power.
- !! During installation, strictly follow the wiring diagram to connect the product.
- After installation, power up the device. In case the product does not operate normally, immediately cut off the power and recheck the wiring.
- If the product still fails to function after rechecking, please contact a professional technician for technical support.



### Local Features Operation Instructions

To enter the menu, short-press the 'Reset' on the indoor unit with a pin or press the "(\*) Key 、 (#) Key" on the outdoor unit. In factory mode, this menu is directly accessible. Otherwise administrator verification is required. The voice will announce 6 options.



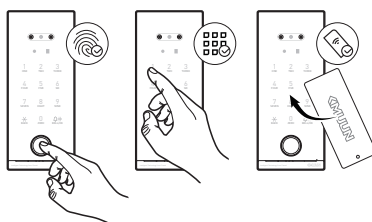
- 1 Create New User
- 2 Delete User
- 3 System Setting
- 4 Install Settings
- 5 Record Search
- 6 Factory Reset

#### 1 Create New User

- 🔊 Operation success, User 00
- 🔊 In initial setup mode (factory mode), the system will enter administrator configuration. You can sign up to 10 administrator keys.
- 🔊 Enter user ID  
After the voice prompt, enter a new or existing user ID (00-99), then press # to confirm. 00 = administrator | 01-99 = standard user.

🔊 user ## enter access key

- 1 Sign up fingerprint, passcode, RFID card



**Passcode Setup:** Enter a 6-10 digit passcode on the keypad. Re-enter it as prompted. If "operation success" is heard, the passcode is set. Passcodes with invalid length or mismatched entries will be rejected. Repeated passcodes are not allowed.

**Fingerprint Enrollment:** Place the finger on the outdoor unit fingerprint sensor. Follow the voice prompt "Please press again" and repeat several times until "operation successful" is announced. Interruption or incorrect presses may cause failure.

**Access Card Registration:** Hold the card close to the keypad area. A voice prompt "operation success" confirms registration. Duplicate cards will be rejected.

#### 2 Sign up facial recognition

🔊 Look directly at the camera  
**Face Registration:** Look directly at the camera and follow the voice instructions. "Operation successful" confirms registration.

Duplicate faces will be prompted. Process times out if delayed. Optimal range: 50 cm.

#### 2 Delete User

- 🔊 Enter user ID  
After the voice prompt, enter a configured user ID (01-99) and press #. If "Operation successful" is announced, the user is deleted. Incorrect IDs will result in failure. User 00 (administrator) cannot be deleted.

#### 3 System Setting

- 🔊 1 Time Setting 2 Set volume 3 Verification Mode 4 Language Settings  
Select a menu to configure after the voice prompt.

##### 1 Time Setting

Follow voice prompts to enter the date (YYMMDD) and time (HHMM). Incorrect settings may disable temporary passcode function.

##### 2 Set volume

- 🔊 Volume Up (tapping key 1) , Volume Down (tapping key 2)

#### 3 Verification Settings

- 🔊  Dual Verification  Single Verification  
Follow the voice prompt to select a method. Single verification requires one credential. Dual verification requires two different credentials.

#### 4 Language Settings

- 🔊 1 Chinese, 2 English

#### 6 Factory Reset

- 🔊 Initializing... Initialization successful.  
Press # to confirm. After the voice prompt, initialization is complete. The device will enter factory mode. Configure new credentials promptly.

#### Auxiliary Functions

##### Factory Reset

Hold the reset button with a pin for 6s until "Initializing... Success" is heard. Release and wait. Unlock will require no credentials. Reconfigure immediately.

#### Lockout Mode

Triggered after 6 failed attempts. The external unit locks and announces "System locked. Try again later." Automatically resumes after 3 minutes.

#### Kmuun App Setup Guide

!! • The temporary password function can be used through the app.

### Notes

- Before use, read all instructions carefully. Damages from non-compliance are not covered by warranty.
- Use only manufacturer-specified accessories and parts.
- Avoid forcefully disassembling to prevent damage.
- Keep away from water or splashing environments.
- Do not clean the fingerprint sensor with sharp objects or corrosive liquids.
- Clean with a soft cloth and water to prevent surface damage.
- Set up the device immediately after installation to avoid safety issues.
- Keep the admin password confidential.
- If the RFID card is lost, reset the device and set up new keys.

### Warranty

- This product's after-sales service strictly follows the "Consumer Protection Law of the People's Republic of China" and the "Product Quality Law of the People's Republic of China," with the following after-sales service terms:
- Within one year from the day after you receive the product, if any performance failure listed in the "Product Performance Fault List" occurs, the product will be repaired free of charge based on the warranty type after being inspected and confirmed by the KMUUN Service Center.
- For damages not covered by the warranty or caused by human factors, the KMUUN Service Center can still provide repair support, but a repair fee will be charged according to the actual condition of the product.